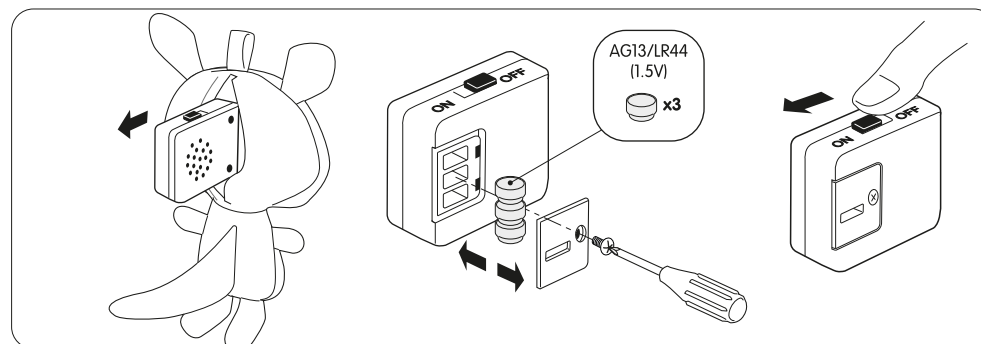
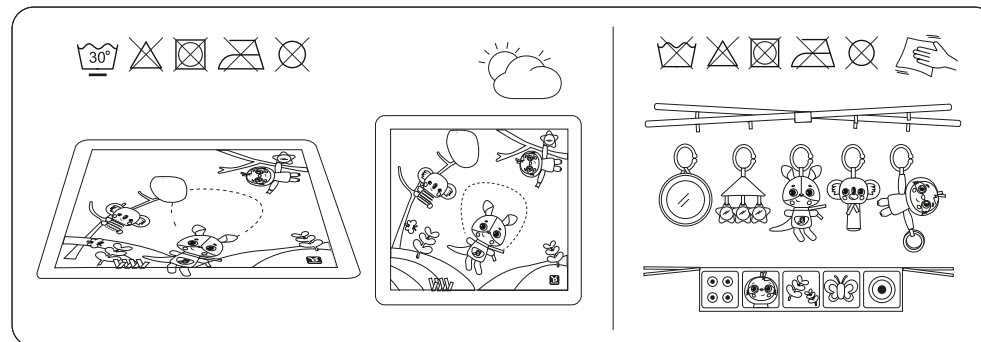
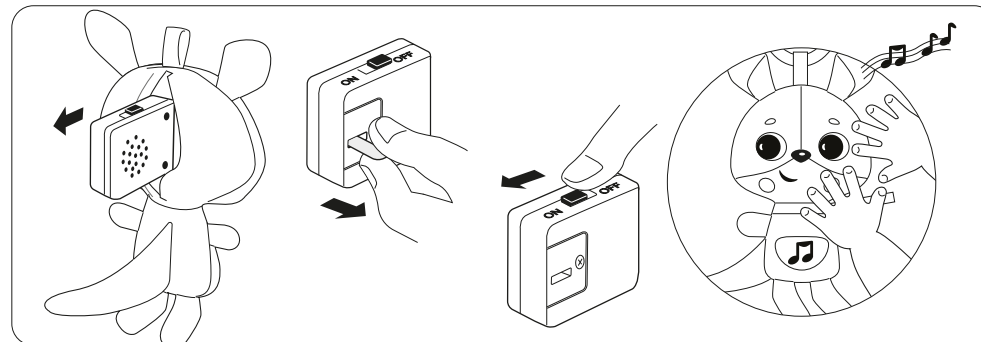
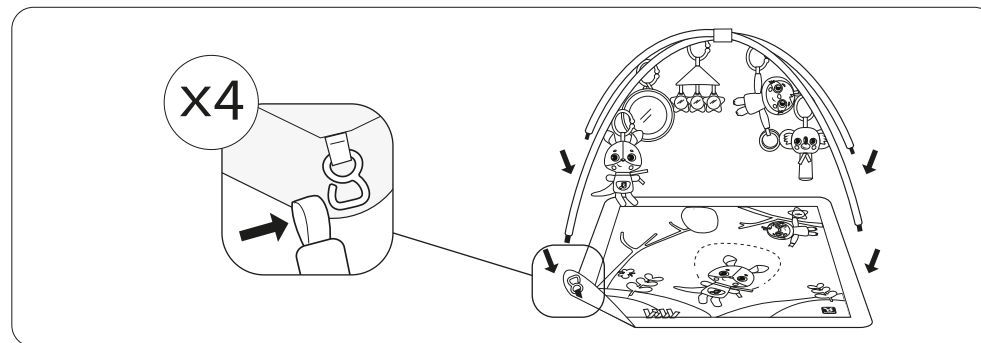
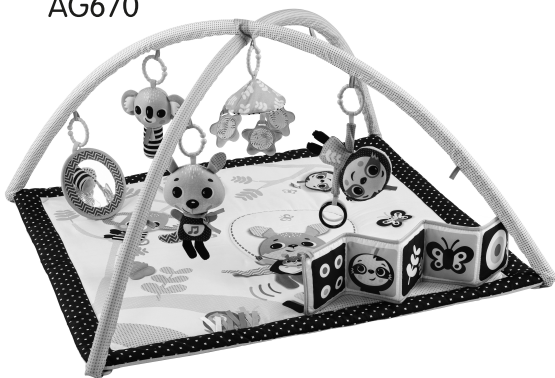




MUSIC & FUN Activity Gym

KANGAROO & FRIENDS

AG670



EN KEEP FOR FUTURE REFERENCE

INSTRUCTION GUIDE

IMPORTANT:

- Adult assembly required.
- Never assemble/dismantle while baby is on mat.
- Always perform these actions away from the baby.
- Do not modify or alter this product in any way.
- Do not leave your children unattended for any time.
- Do not allow baby to play with the arches when they are not attached to the mat.

WARNING:

- Dispose of used batteries immediately.
- Keep new and used batteries away from children. If you think batteries might have been swallowed or placed inside any part of the body, seek immediate medical attention.
- Batteries should be replaced by adults only. Philips screwdriver required for reinstallation batteries (not included).
- Uses 3 button-cell batteries (1.5 v type LR44/AG13) included.



For Australia only:

- The battery can cause serious injuries if it is swallowed or placed inside any part of the body.

BATTERY SAFETY INFORMATION:

- We recommend alkaline batteries for longer battery life.
- Do not mix old and new batteries.
- Do not mix alkaline, standard (carbon-zinc) or rechargeable (nickel-cadmium) batteries.
- Do not charge non-rechargeable batteries.
- Rechargeable batteries are to be removed from the unit before being charged.
- Rechargeable batteries are only to be charged under adult supervision.
- Use only batteries of the same or equivalent type as recommended.
- Batteries are to be inserted with the correct polarity (+ and -).
- The supply terminals are not to be short-circuited.
- Check that all contact surfaces are clean and bright before installing batteries.
- Exhausted batteries are to be removed from a product.
- Dispose of batteries in a safe and appropriate manner.
- Install new batteries and retry function before calling Consumer Relations on electronics.
- At the end of their useful life, dispose of the product/batteries in an appropriate collection point.

Cleaning and storage:

- Washing instructions:



- Do not submerge other parts of the product in water
- Remove the batteries for long-term storage or periods of non-use.

MANUFACTURED IN WF DONGGUAN, CHINA